

**HINDALCO<sup>++</sup>**  
**PrizTec** BIKE & E-BIKE SOLUTIONS

PRECISION ENGINEERING



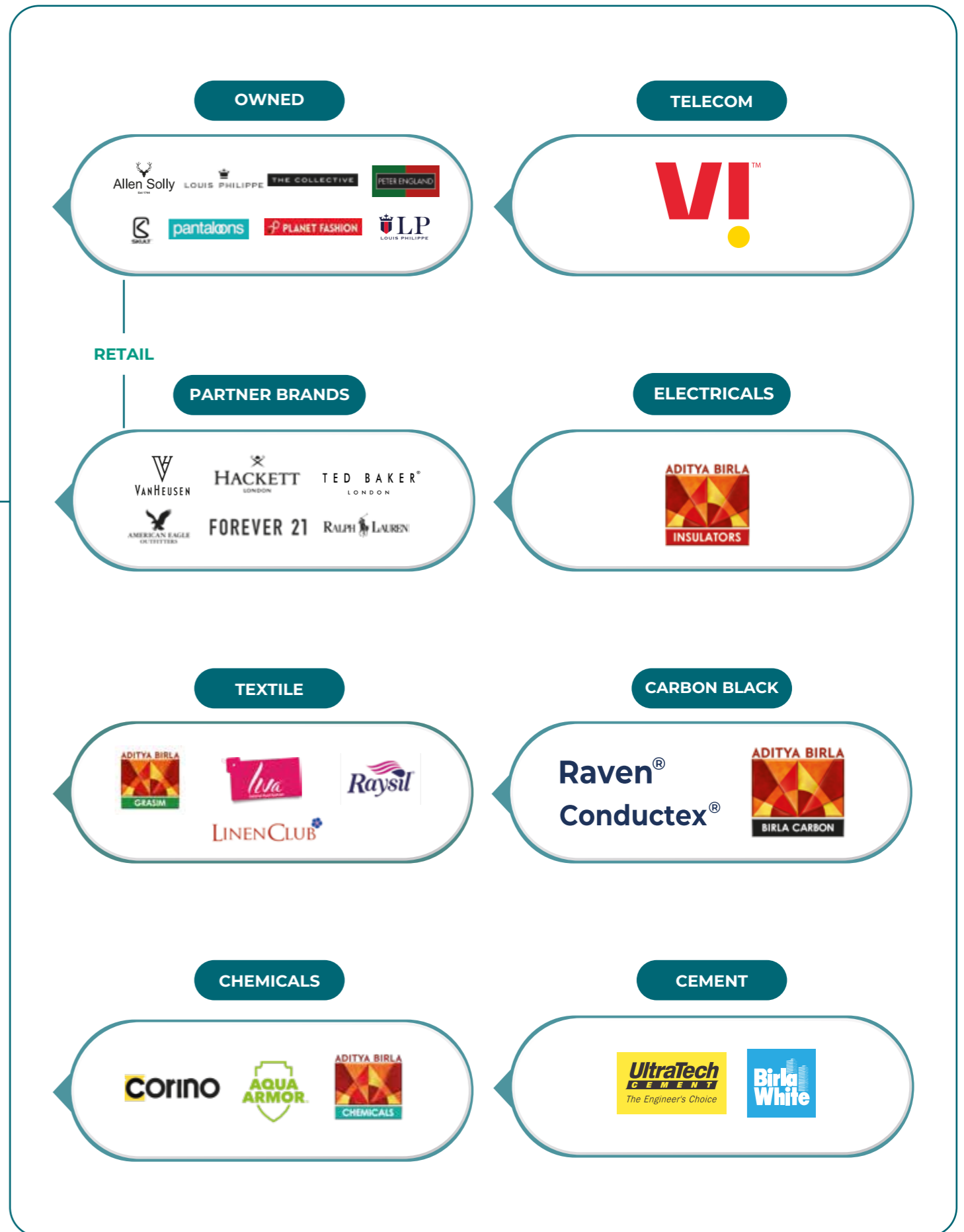
# HINDALCO'S **ALUMINIUM BIKE & E-BIKE** SOLUTIONS.



# INDEX

About ABG	_____	2
About Hindalco & Range Brands	_____	4
Sustainability Credentials	_____	6
End-to-end value chain	_____	8
Research & Development	_____	10
Certifications & Accolads	_____	11
Array of bike & e-bike components	_____	12
Export Map	_____	14
Frames	_____	16
Forks	_____	38
Handlebars	_____	46
Wheelrims	_____	64

# ABOUT ADITYA BIRLA GROUP



**USD 65 BILLION**  
TURNOVER  
CONGLOMERATE

**ACTIVE IN 6**  
CONTINENTS  
**41 COUNTRIES**

**178**  
STATE-OF-THE-ART  
MANUFACTURING  
UNITS GLOBALLY

**187,000+** EMPLOYEES  
OF OVER **100** NATIONALITIES

**300 MILLION+**  
LOYAL CUSTOMER BASE

## About Hindalco

Hindalco Industries Limited is the metals flagship company of the Aditya Birla Group and a global leader in Aluminium, Copper, and Specialty Alumina. It is India's largest fully integrated aluminium manufacturer and one of Asia's top primary aluminium producers. Its subsidiary, Novelis Inc., is the world's largest aluminium rolling company and recycler.

Hindalco also operates a major copper smelter and fertiliser plant, and is the third-largest copper cathode rod manufacturer outside China.

Our specialty alumina (Chemicals) business is at the forefront of the industry in India and is recognised as a prominent global player in specialty alumina and hydrates.

**USD 28 BILLION**  
METAL POWERHOUSE

**ACTIVE IN 6 CONTINENTS**  
**10 COUNTRIES**

**52**  
STATE-OF-THE-ART  
MANUFACTURING  
UNITS GLOBALLY

**79,000+**  
EMPLOYEES WORLDWIDE

## Our 5 Range Brands Offer Unique Benefits Across Sectors:

<b>HINDALCO++</b> ECOEDGE-C	Products/solutions that are circular in nature and hold recreation or recycling at their core.	Ingots from Recycled Aluminium, Aluminium Circles for Cookware, Aluminium Foil for Food Packaging, Copper Rods.
<b>HINDALCO++</b> ECOEDGE-G	Products/solutions that are zero or low carbon, use alternate sources of energy, and are ultimately greener, smarter, and better.	Primary Ingots made using Renewable Energy, Ultra light Gauge Aluminium Foil for Packaging.
<b>HINDALCO++</b> PrizTec	Products/solutions which promise use of superior technology to deliver precision and meeting exacting standards for high-tech applications.	Precision Extrusions for Transport, Aerospace, Defence and Electricals & Electronics, AluAlu foil for Pharmaceutical Packaging, Aluminium Rolled Stock for Closure, Clad, Litho, Detonators, Fin, Foil and Battery Foil, Copper Oxygen-Free Rods, Copper-Magnesium & Copper-Silver Rods for Railway Electrification, Copper Inner Groove Tubes for Air Conditioning and Refrigeration, Speciality Alumina Solutions for Refractory, Ceramics, Polishing, and Battery applications, EV Battery Frame Solutions, Bike & E-Bike Components, Battery Foil Solutions and Crash Components.
<b>HINDALCO++</b> Everlast	Products/solutions that offer the promise of durability and toughness.	Roofing and Façade Solutions for B&C, Bus Body Solutions.
<b>HINDALCO++</b> InnoSafe	Product/solutions that offer safety as their core value proposition.	Flame Retardant Solutions for Electrical Transmission, Building and Construction, Automotive, Railways and many more.



# Our Commitment to Sustainability

## Renewables & Decarbonization

Reached 470 MW renewable capacity, including India's 1<sup>st</sup> 200 MW project at Aditya Aluminium.



## Environmental Effects

Recycled and reused 21.78 Mn m<sup>3</sup> of water and harvested 18 Mn m<sup>3</sup> of rainwater to enhance water security.



## Recycling of Waste

88% of total waste recycled and reused including 3.58 MnT of red mud and 100% ash utilisation.



## Impact on Biodiversity

Planted 8.55 lakh saplings, taking the cumulative total to 6.3 million, along with mangrove restoration and habitat conservation initiatives.

# HINDALCO INDUSTRIES

## TOP 1%

S&P Global (DJSI) ESG Score 2026

**89** / 100

Position and Score are industry specific and reflect exclusion screening criteria. Learn more at [spglobal.com/esg/yearbook](https://spglobal.com/esg/yearbook)

## ESG Targets


- Zero net carbon & net loss of biodiversity by 2050
- 100% of electricity requirement from renewable energy by 2050
- Zero waste to landfill by 2050
- Zero harm to occupational health & safety

At Hindalco, our unwavering commitment to enriching lives is intricately woven into our sustainability efforts. We firmly believe in creating a greener future, and to achieve this, we are committed to attaining our environmental goals. Our ESG commitment is deeply ingrained in our strategic priorities, which drive positive change and make a lasting impact on the planet. Awarded "Most Sustainable Aluminium Company" in Dow Jones Sustainability Indices six years in a row from 2021-2026.

# A FULLY INTEGRATED PRIMARY AND DOWNSTREAM SOLUTIONS PROVIDER



**UPSTREAM INTEGRATION**  
Production of purest smelter grade metal



**DOWNSTREAM**  
Deep expertise in alloying, rolling and extrusions



**APPLICATION MARKETS**  
Proven capability in end-use applications



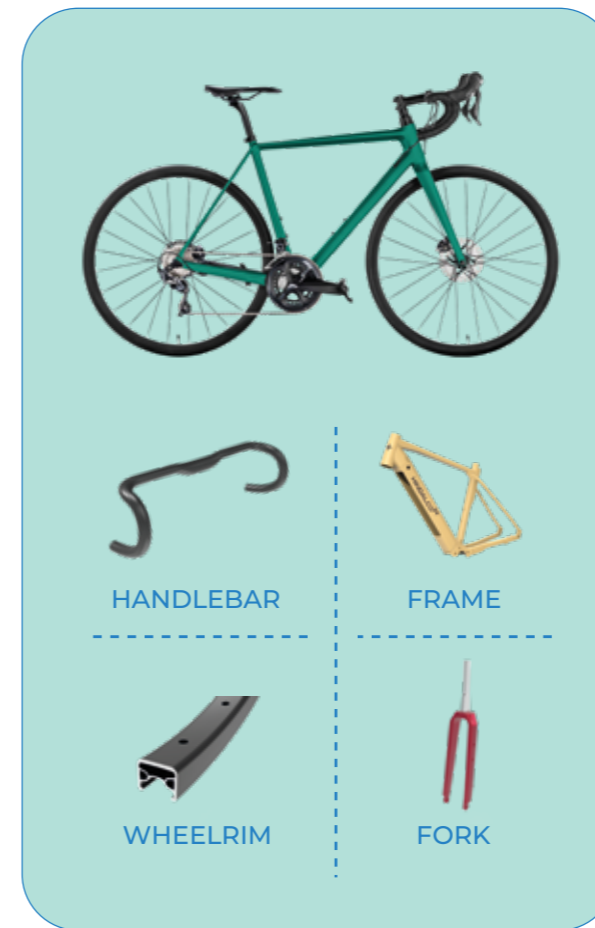
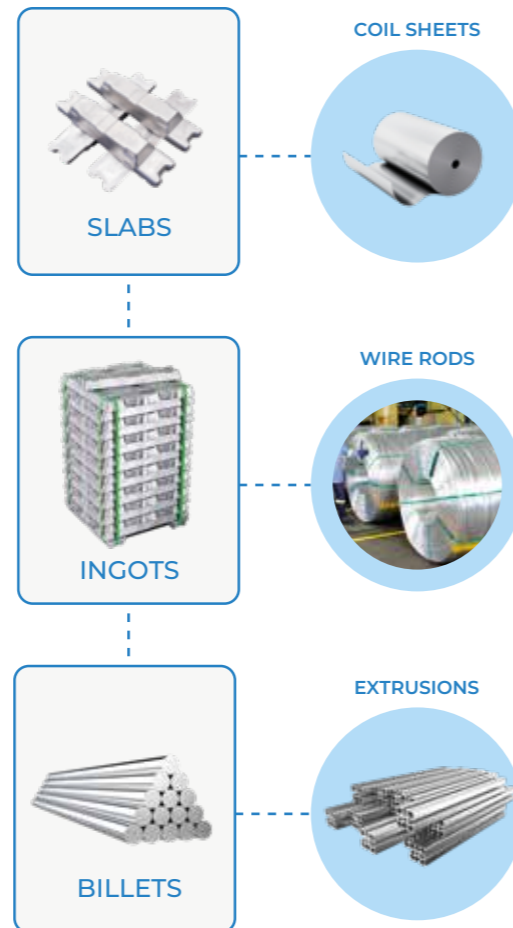
**RECYCLING**  
Closing the loop with eco-friendly recycling



Captive Bauxite Mines



Refineries and Smelters



Process Scrap

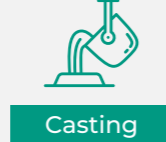


End of Life Scrap

**In-house R&D:**

Recognised by Ministry of Science & Technology, Govt. of India with NABL accreditation testing facilities

- Sheet and Extrusion Metallurgy
- Product Development
- Process Development/Improvement
- Texture
- Additive Manufacturing
- Technical Support
- New Alloy Development: Customisation of alloys and new generation material development for specific applications
- Metal Forming Technology:



**PLANT CERTIFICATIONS**

9001, 14001, 45001, SA8000, SMETA

**PRODUCT TESTING**

ISO 4210, EN17406, JIS D9414, 9417, 9421

**3<sup>RD</sup> PARTY LAB TEST**

Third Party Testing Facility - Specifically for European Customers. Test Reports Generated by this Third-party Lab on Manufacturer Frame Samples for Metallurgy Testing, Dimension Check, Mechanical Testing etc.

**SURFACE TESTS**

**NSS TEST**

ISO9227/ASTM B117, UV - ISO 4892/ ASTM G154

**HUMIDITY TEST**

ISO 6270/ ASTM D2247

**ADHESION TEST**

ASTM D3359

**PENCIL HARDNESS TEST**

ASTMD3363

**IMPACT TEST**

ASTM D2794

**GLOSS TEST**

ASTM D523

**GENERAL COMPLIANCE**

**RoHS**

Restricts Hazardous Substances

**REACH**

EU Chemical Safety Compliance

**Welding Certifications (e.g., AWS D1.2)**

Weld Quality & Safety. For Welded Frames and Other Welded Parts

**Corrosion Protection of Coated Aluminium Parts**

Coating Durability in Various Environments (C2-C5)



# AN ARRAY OF BIKE & E-BIKE COMPONENTS

**Advanced equipment for precision manufacturing and consistent high-quality products:**

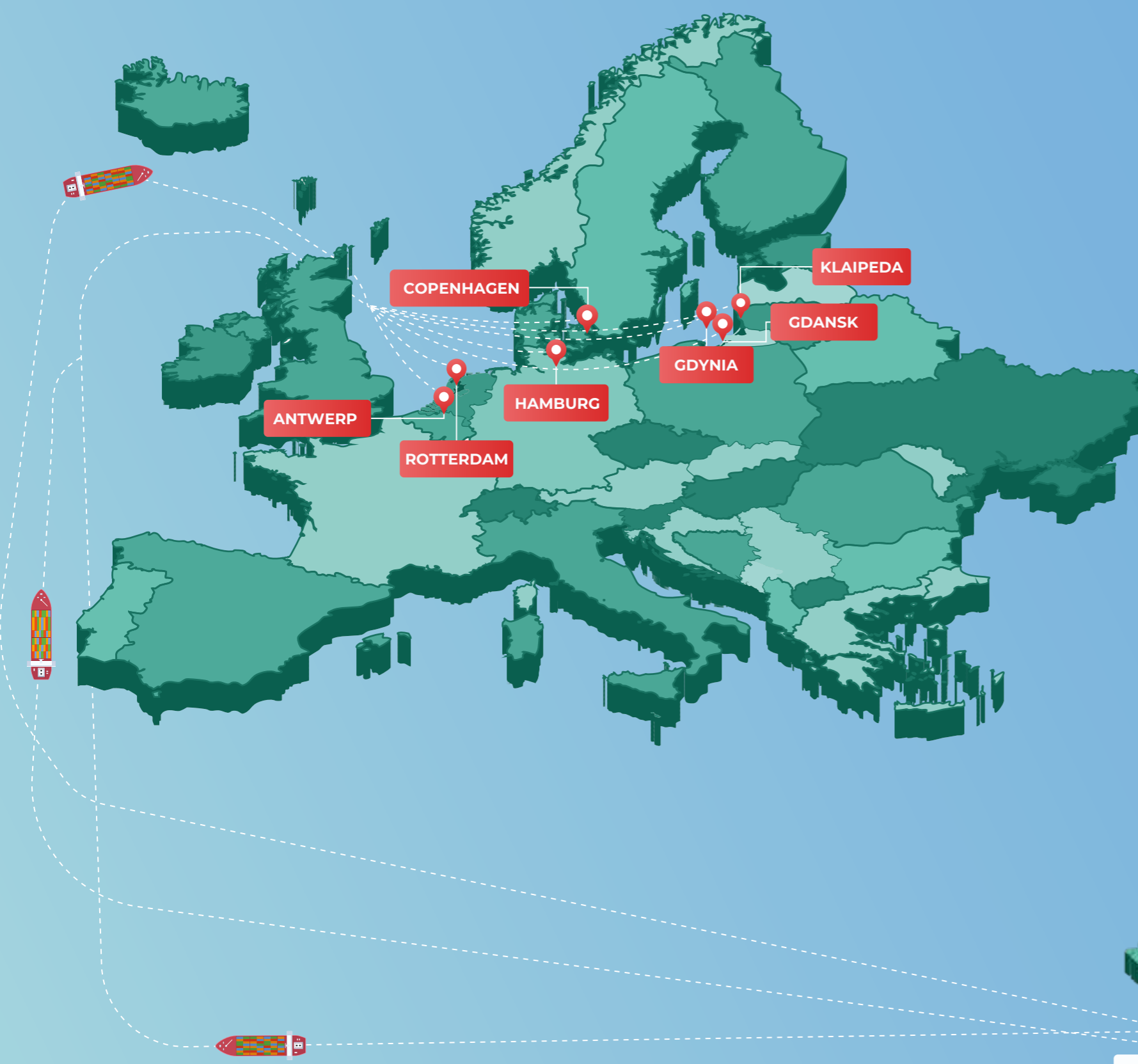
- Machining, 3D laser cutting, 3-axis & 4-axis VMCs
- Hydroforming, hydraulic presses, double & triple butting
- Heat treatment – T4, T6 and annealing
- Welding – robotic & manual (CMT/TIG) with pulse and without pulse

**World-class testing facility for aluminium cycle components:**

- Weld penetration test
- Salt spray testing, Xenon arc testing, hardness testing
- ISO 4210 compliant and above standards

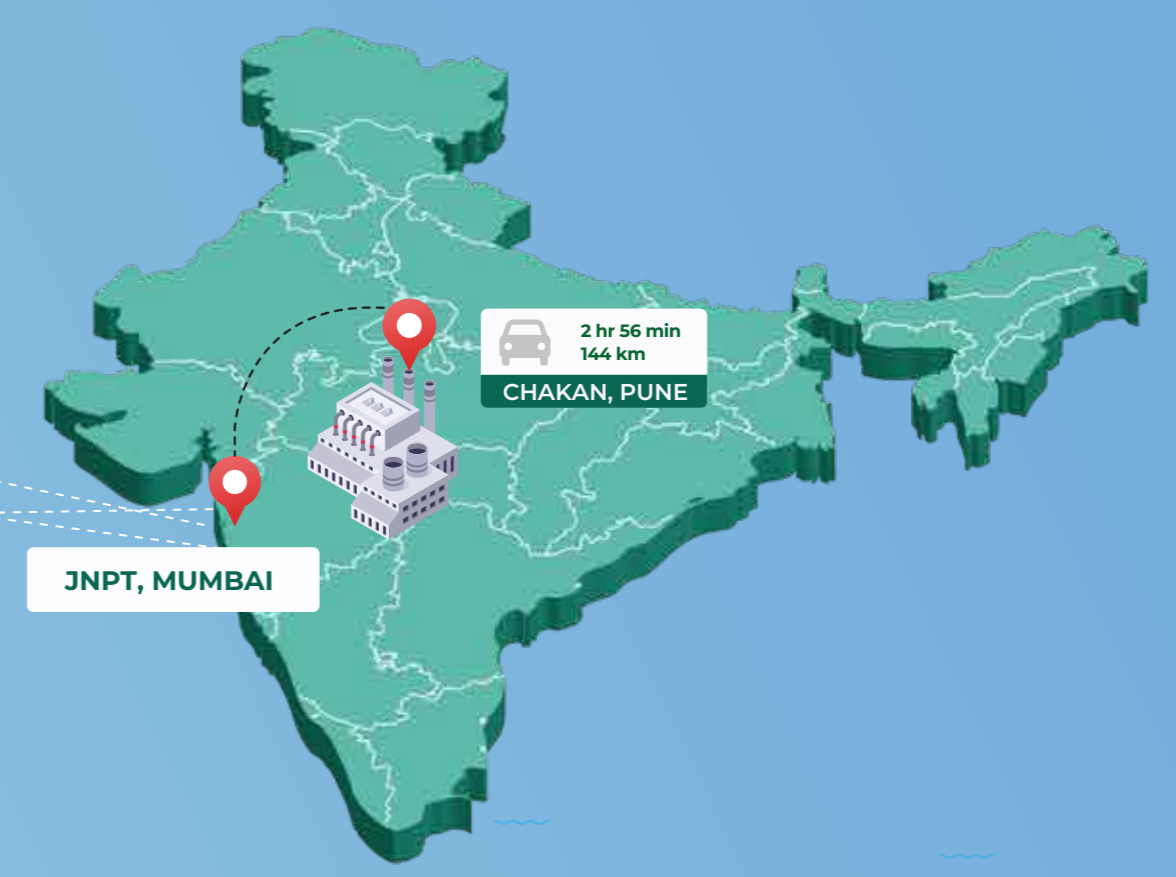
**World-class manufacturing plant of aluminium cycle components for e-bikes & cargo bikes:**

- Dedicated new product development team for new alloy development
- In-house product development team for unique design
- OHSAS compliant and ISO compliant manufacturing plant



**Transit Time Comparison:  
India v/s Other Asian Countries**

- Port of Rotterdam  
India (JNPT): ~30-40 days (best case ~30)  
Other Asian Countries: ~28-35 days
- Port of Antwerp  
India (JNPT): ~32-42 days  
Other Asian Countries: ~30-38 days
- Port of Klaipėda  
India (JNPT): ~40-50 days  
Other Asian Countries: ~42-55 days
- Port of Gdynia  
India (JNPT): ~38-48 days  
Other Asian Countries: ~40-52 days
- Port of Hamburg  
India (JNPT): ~30-38 days  
Other Asian Countries: ~33-40 days (typical schedules)



**EUROPE EXPORT**  
MADE CONVENIENT

\*All comparison figures are illustrative and based on general best case data. Real time rates and carrier schedules may vary.



# FRAMES



**MODEL: HIL TRAD-CITY 26"**

Material: **AL6061**  
 Frame Size (cm): **S/M/L/XL**  
 Old (mm): **145/Custom**  
 E.D.U. Compatibility: **Hub Drive**  
 Weight (kg): **1.8**



**MODEL: HIL E-HYBRID LOW STEP (WITH BELT-DRIVE)**

Material: **AL6061**  
 Frame Size (cm): **S/M/L/XL**  
 Old (mm): **138/Custom**  
 E.D.U. Compatibility: **250W Mid Drive Bafang Motor**  
 Battery Capacity: **Integrated Power Tube**  
 Weight (kg): **3.8**





**MODEL: HIL TRADITIONAL MTB 29"**

Material: **AL6061**  
 Frame Size (cm): **S/M/L/XL**  
 Old (mm): **148 with Thru Axel (M12x1P)/Custom**  
 Weight (kg): **2.3**



**MODEL: HIL HARDTAIL SUV E-MTB**

Material: **AL6061**  
 Frame Size (cm): **S/M/L/XL**  
 Old (mm): **142 with Thru Axel/Custom**  
 E.D.U. Compatibility: **350W Mid Drive Motor (Bosch/Custom)**  
 Battery Capacity: **Integrated Power Tube**  
 Weight (kg): **4.1**



**MODEL: HIL E-GRAVEL**

Material: **AL6061**  
 Frame Size (cm): **S/M/L/XL**  
 Old (mm): **135/142 with Thru Axle/Custom**  
 E.D.U. Compatibility: **450W Mid Drive Motor (FAZUA RIDE 60/Custom)**  
 Battery Capacity: **FAZUA 430Wh/Custom**  
 Weight (kg): **3.1**



**MODEL: HIL E-COMMUTER HIGH**

Material: **AL6061**  
 Frame Size (cm): **S/M/L/XL**  
 Old (mm): **138/Custom**  
 E.D.U. Compatibility: **Hub Motor**  
 Battery Capacity: **Integrated Power Tube**  
 Weight (kg): **4.2**


**MODEL: HIL GRAVEL 700C**

Material: **AL6061**  
 Frame Size (cm): **S/M/L/XL**  
 Old (mm): **138/Custom**  
 E.D.U. Compatibility: **Traditional Pedal Bike**  
 Weight (kg): **2.4**


**MODEL: HIL E-COMMUTER LOW**

Material: **AL6061**  
 Frame Size (cm): **XS/S/M/L**  
 Old (mm): **138/Custom**  
 E.D.U. Compatibility: **Hub Motor**  
 Battery Capacity: **Integrated Power Tube**  
 Weight (kg): **3.6**



**MODEL: HIL TRAD-COMMUTER**

Material: **Butted AL6061**  
 Frame Size (cm): **S/M/L/XL**  
 Old (mm): **135/Custom**  
 Weight (kg): **2.8**



**MODEL: HIL BUTTED ROAD**

Material: **Butted AL6061**  
 Frame Size (cm): **S/M/L/XL**  
 Old (mm): **138/Custom**  
 Battery Capacity: **Integrated Power Tube**  
 Weight (kg): **1.8**



**MODEL: HIL E-ENDURO**

Material: **AL6061**  
 Frame Size (cm): **M/L/XL**  
 Old (mm): **148/Custom**  
 E.D.U. Compatibility: **450W Mid Drive Motor Bosch**  
 Battery Capacity: **Bosch 625Wh Power Tube/Custom**  
 Weight (kg): **4.2**



**MODEL: HIL E-TREKKING LOW STEP - 1**

Material: **AL6061**  
 Frame Size (cm): **XS/M/L**  
 Old (mm): **135/Custom**  
 E.D.U. Compatibility: **250W Mid Drive Motor (Bafang/Bosch/Custom)**  
 Battery Capacity: **840Wh Power Tube (Bafang/Bosch/Custom)**  
 Weight (kg): **4.8**



#### MODEL: HIL E-TREKKING IC

Material: **AL6061**  
 Frame Size (cm): **S/M/L/XL**  
 Old (mm): **138/Custom**  
 E.D.U. Compatibility: **350W Mid Drive Motor (Ananda/Bafang/Bosch)**  
 Battery Capacity: **Integrated Power Tube**  
 Weight (kg): **4.5**



#### MODEL: HIL E-URBAN LOW

Material: **AL6061**  
 Frame Size (cm): **S/M/L/XL**  
 Old (mm): **138/Custom**  
 E.D.U. Compatibility: **Hub Motor**  
 Battery Capacity: **Integrated Power Tube**  
 Weight (kg): **3.2**



## MODEL: HIL E-FOLDING - 1

Material: **AL6061**  
 Frame Size (cm): **S/M**  
 Old (mm): **138/Custom**  
 E.D.U. Compatibility: **Hub Motor**  
 Battery Capacity: **External Battery/Custom**  
 Weight (kg): **3.2**



## MODEL: HIL E-FOLDING - 2

Material: **AL6061**  
 Frame Size (cm): **S/M**  
 Old (mm): **190/Custom**  
 E.D.U. Compatibility: **Hub Motor**  
 Battery Capacity: **Integrated Battery Swapping**  
 Weight (kg): **3.1**



**MODEL: HIL E-CARGO - 1**

Material: **AL6061**  
 Frame Size (cm): **M**  
 OLD (mm): **135/Custom**  
 E.D.U. Compatibility: **350W Mid Drive Motor (Brose/Bafang/Bosch/Custom)**  
 Battery Capacity: **468Wh/814Wh External Battery (Single/Double Battery Pack)**  
 Weight (kg): **20**



**MODEL: HIL E-CARGO - 2**

Material: **AL6061**  
 Frame Size (cm): **M**  
 OLD (mm): **135/Custom**  
 E.D.U. Compatibility: **350W Mid Drive Motor (Brose/Bafang/Bosch/Custom)**  
 Battery Capacity: **468Wh/814Wh External Battery (Single/Double Battery Pack)**  
 Weight (kg): **22.6**



# FORKS



**MODEL: HIL E-FOLDING - 1**

Material: <b>AL6061</b>	Legs Type: <b>Curved</b>
Steerer Tube (mm): <b>Φ28.6/Custom</b>	Calliper Mount: <b>IS Mount</b>
Fork Length (mm): <b>310/Custom</b>	Weight (g): <b>740</b>
OLD (mm): <b>100</b>	
Wheel Size: <b>20</b>	
Fork Offset (mm): <b>45</b>	
Wire Routing: <b>External</b>	
Steering Column: <b>Straight</b>	
Type: <b>Threadless</b>	



**MODEL: HIL GRAVEL 700C - 1**

Material: <b>AL6061</b>	Legs Type: <b>Straight</b>
Steerer Tube (mm): <b>Φ28.6/Custom</b>	Calliper Mount: <b>Flat Mount</b>
Fork Length (mm): <b>406/Custom</b>	Weight (g): <b>920</b>
OLD (mm): <b>100</b>	
Wheel Size: <b>24/26/27.5/29"</b>	
Fork Offset (mm): <b>47</b>	
Wire Routing: <b>Internal</b>	
Steering Column: <b>Tapered</b>	
Type: <b>Threadless</b>	



**MODEL: HIL GRAVEL 700C MODEL - 2**

Material: **AL6061**  
 Steerer Tube (mm): **Φ28.6/Custom**  
 Fork Length (mm): **402/Custom**  
 OLD (mm): **100**  
 Wheel Size: **24/26/27.5/29/700C**  
 Fork Offset (mm): **45**  
 Wire Routing: **Internal**  
 Steering Column: **Straight**  
 Type: **Threadless**

Legs Type: **Straight**  
 Calliper Mount: **Flat Mount**  
 Weight (kg): **1.1**



**MODEL: HIL E-CITY - 1**

Material: **AL6061**  
 Steerer Tube (mm): **Φ28.6/Custom**  
 Fork Length (mm): **463.8/Custom**  
 OLD (mm): **100**  
 Wheel Size: **24/26/27.5/29/700C**  
 Fork Offset (mm): **45**  
 Wire Routing: **Internal**  
 Steering Column: **Straight**  
 Type: **Threadless**

Legs Type: **Straight**  
 Calliper Mount: **Flat Mount**  
 Weight (kg): **1.2**

# FORKS

HINDALCO<sup>++</sup>



## MODEL: HIL E-CITY - 2

Material: **AL6061**

Steerer Tube (mm): **Φ28.6/Custom**

Fork Length (mm): **370/Custom**

OLD (mm): **100**

Wheel Size: **24/26/27.5/29/700C**

Fork Offset (mm): **45**

Wire Routing: **Internal**

Steering Column: **Tapered**

Type: **Threadless**

Legs Type: **Straight**

Calliper Mount: **Flat Mount**

Weight (kg): **1**

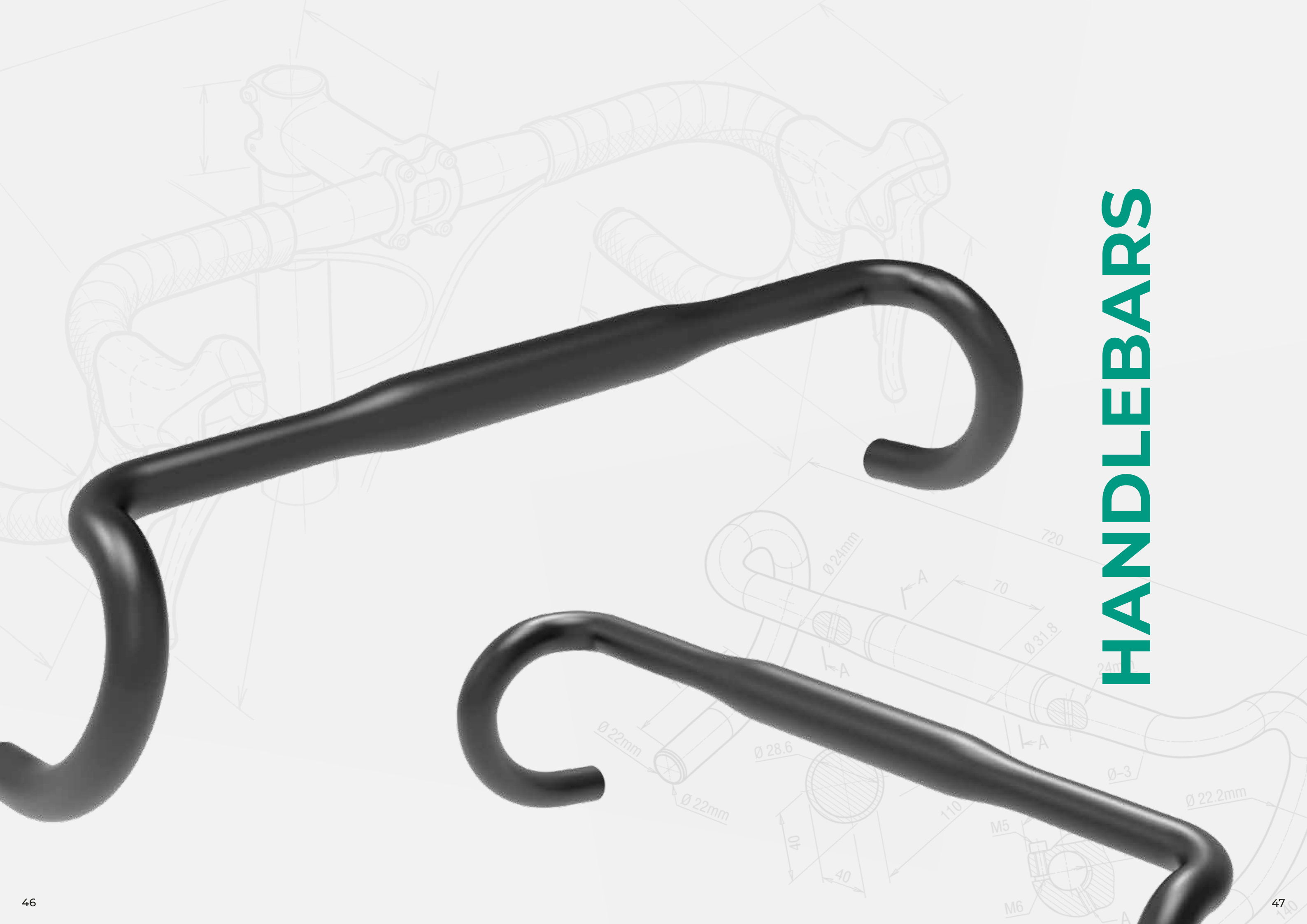
FOLDING

GRAVEL

ROAD



# HIGH-PERFORMANCE COMPONENTS



# HANDLEBARS



**MODEL: HIL-FOLD-001**

Material: **AL6061**  
 Clamp Diameter: **31.8**  
 Bar Diameter: **22.2**  
 Widths (mm): **630/650/670**  
 Backsweep Angle (°): **0**  
 Upsweep Angle (°): **0**  
 Rise (mm): **0**  
 Weight (g): **600 (650mm)**



**MODEL: HIL-KIDS-003**

Material: **AL6061**  
 Clamp Diameter: **25.4**  
 Bar Diameter: **22.2**  
 Widths (mm): **560/580/600/620**  
 Backsweep Angle (°): **10**  
 Upsweep Angle (°): **0**  
 Rise (mm): **40**  
 Weight (g): **209 (580mm)**



**MODEL: HIL-KIDS-001**

Material: **AL6061**  
 Clamp Diameter: **35**  
 Bar Diameter: **22.2**  
 Widths (mm): **720/740/760/780/800**  
 Backsweep Angle (°): **9**  
 Upsweep Angle (°): **3**  
 Rise (mm): **20**  
 Weight (g): **294 (760mm)**



**MODEL: HIL-KIDS-004**

Material: **AL6061**  
 Clamp Diameter: **25.4**  
 Bar Diameter: **22.2**  
 Widths (mm): **440/460/480/500/520/540/560**  
 Backsweep Angle (°): **10**  
 Upsweep Angle (°): **0**  
 Rise (mm): **50**  
 Weight (g): **211 (580mm)**



**MODEL: HIL-KIDS-002**

Material: **AL6061**  
 Clamp Diameter: **25.4**  
 Bar Diameter: **22.2**  
 Widths (mm): **460/580**  
 Backsweep Angle (°): **10**  
 Upsweep Angle (°): **0**  
 Rise (mm): **20**  
 Weight (g): **206 (580mm)**



**MODEL: HIL-KIDS-005**

Material: **AL6061**  
 Clamp Diameter: **25.4**  
 Bar Diameter: **22.2**  
 Widths (mm): **440/460/480/500/520**  
 Backsweep Angle (°): **15**  
 Upsweep Angle (°): **0**  
 Rise (mm): **80**  
 Weight (g): **202 (500mm)**



**MODEL: HIL-MTB-001**

Material: **AL6061**  
 Clamp Diameter: **31.8**  
 Bar Diameter: **22.2**  
 Widths (mm): **720/740/760/780/800**  
 Backsweep Angle (°): **9**  
 Rise (mm): **30**  
 Weight (g): **350**



**MODEL: HIL-MTB-004**

Material: **AL6061**  
 Clamp Diameter: **35**  
 Bar Diameter: **22.2**  
 Widths (mm): **720/740/760/780/800**  
 Backsweep Angle (°): **6/9**  
 Upsweep Angle (°): **0**  
 Rise (mm): **5**  
 Weight (g): **297 (760mm)**



**MODEL: HIL-MTB-002**

Material: **Butted AL6061**  
 Clamp Diameter: **31.8**  
 Bar Diameter: **22.2**  
 Widths (mm): **720/740/760/780/800**  
 Backsweep Angle (°): **9**  
 Upsweep Angle (°): **3**  
 Rise (mm): **30**  
 Weight (g): **220 (720mm)**



**MODEL: HIL-MTB-006**

Material: **AL6061**  
 Clamp Diameter: **31.8**  
 Bar Diameter: **22.2**  
 Widths (mm): **580/600/620/640/660/680/700/720/740/760/780**  
 Backsweep Angle (°): **6/9**  
 Upsweep Angle (°): **0**  
 Rise (mm): **5**  
 Weight (g): **295 (760mm)**



**MODEL: HIL-MTB-003**

Material: **AL6061**  
 Clamp Diameter: **31.8**  
 Bar Diameter: **22.2**  
 Widths (mm): **720/740/760/780/800**  
 Backsweep Angle (°): **0**  
 Upsweep Angle (°): **0**  
 Rise (mm): **0**  
 Weight (g): **296 (780mm)**



**MODEL: HIL-MTB-007**

Material: **AL6061**  
 Clamp Diameter: **31.8/35**  
 Bar Diameter: **22.2**  
 Widths (mm): **580/600/620/640/660/680/700/720/740/760/780**  
 Backsweep Angle (°): **6/9**  
 Upsweep Angle (°): **4**  
 Rise (mm): **12**  
 Weight (g): **294 (760mm)**



**MODEL: HIL-MTB-008**

Material: **AL6061**  
 Clamp Diameter: **31.8**  
 Bar Diameter: **22.2**  
 Widths (mm): **580/600/620/640/660/680/700/720/740/760/780**  
 Backsweep Angle (°): **6/9/15**  
 Upsweep Angle (°): **3**  
 Rise (mm): **20**  
 Weight (g): **294 (760mm)**



**MODEL: HIL-MTB-011**

Material: **AL6061**  
 Clamp Diameter: **31.8**  
 Bar Diameter: **22.2**  
 Widths (mm): **560/580/600/620/640/660/680/700/720/740/760/780**  
 Backsweep Angle (°): **6/9/15**  
 Upsweep Angle (°): **5/6**  
 Rise (mm): **30/45**  
 Weight (g): **270 (680mm)**



**MODEL: HIL-MTB-009**

Material: **AL6061**  
 Clamp Diameter: **Φ25.4/Φ31.8**  
 Bar Diameter: **22.2**  
 Widths (mm): **Φ25.4:540/560/580/600/620/Φ31.8:560/580/600/620/640/660/680**  
 Backsweep Angle (°): **4/6/10/15**  
 Upsweep Angle (°): **0**  
 Rise (mm): **0**  
 Weight (g): **258 (660mm)**



**MODEL: HIL-MTB-015**

Material: **AL6061**  
 Clamp Diameter: **25.4**  
 Bar Diameter: **22.2**  
 Widths (mm): **560/580/600/620**  
 Backsweep Angle (°): **6/10/15**  
 Upsweep Angle (°): **0**  
 Rise (mm): **20/30/40**  
 Weight (g): **225 (620mm)**



**MODEL: HIL-MTB-010**

Material: **AL6061**  
 Clamp Diameter: **31.8**  
 Bar Diameter: **22.2**  
 Widths (mm): **560/580/600/620/640/660/680/700/720**  
 Backsweep Angle (°): **6/9**  
 Upsweep Angle (°): **6**  
 Rise (mm): **25**  
 Weight (g): **263 (660mm)**



**MODEL: HIL-MTB-016**

Material: **AL6061**  
 Clamp Diameter: **25.4**  
 Bar Diameter: **22.2**  
 Widths (mm): **560/580/600/620**  
 Backsweep Angle (°): **6/10/15**  
 Upsweep Angle (°): **0**  
 Rise (mm): **50/60**  
 Weight (g): **233 (620mm)**



**MODEL: HIL-MTB-018**

Material: **AL6061**  
 Clamp Diameter: **25.4**  
 Bar Diameter: **22.2**  
 Widths (mm): **560/580/600/620/640**  
 Backsweep Angle (°): **10/15**  
 Upsweep Angle (°): **0**  
 Rise (mm): **100**  
 Weight (g): **262 (640mm)**



**MODEL: HIL-MTB-019**

Material: **AL6061**  
 Clamp Diameter: **25.4**  
 Bar Diameter: **19**  
 Widths (mm): **380/440/460/480**  
 Backsweep Angle (°): **6**  
 Upsweep Angle (°): **0**  
 Rise (mm): **0**  
 Weight (g): **151 (480mm)**



**MODEL: HIL-MTB-020**

Material: **AL6061**  
 Clamp Diameter: **31.8**  
 Bar Diameter: **22.2**  
 Widths (mm): **700/720**  
 Backsweep Angle (°): **10/15**  
 Upsweep Angle (°): **0**  
 Rise (mm): **86**  
 Weight (g): **303 (720mm)**



**MODEL: HIL-RD-001**

Material: **AL6061**  
 Clamp Diameter: **31.8**  
 Bar Diameter: **22.2**  
 Widths (mm): **400/420/440**  
 Rise (mm): **0**  
 Flare/Outsweep (°): **16**  
 Drop (mm): **125**  
 Weight (g): **320 (520mm)**



**MODEL: HIL-RD-002**

Material: **AL6061**  
 Clamp Diameter: **31.8**  
 Bar Diameter: **22.2**  
 Widths (mm): **400/420/440**  
 Flare/Outsweep (°): **15**  
 Drop (mm): **129**  
 Weight (g): **325 (450mm)**



**MODEL: HIL-RD-003**

Material: **AL6061**  
 Clamp Diameter: **31.8**  
 Bar Diameter: **24**  
 Widths (mm): **400/420/440**  
 Rise (mm): **0**  
 Flare/Outsweep (°): **16**  
 Drop (mm): **125**  
 Reach (mm): **78**  
 Weight (g): **348 (420mm)**



**MODEL: HIL-RD-004**

Material: **AL6061**  
 Clamp Diameter: **31.8**  
 Bar Diameter: **24**  
 Widths (mm): **400/420/440/460/480**  
 Rise (mm): **0/10**  
 Flare/Outsweep (°): **4/16**  
 Drop (mm): **115/125**  
 Reach (mm): **70/78**  
 Weight (g): **307 (420mm)**



**MODEL: HIL-RD-005**

Material: **AL6061**  
 Clamp Diameter: **31.8**  
 Bar Diameter: **24**  
 Widths (mm): **380/400/420/440**  
 Rise (mm): **20**  
 Flare/Outsweep (°): **4**  
 Drop (mm): **125**  
 Reach (mm): **75**  
 Weight (g): **315 (420mm)**



**MODEL: HIL-RD-007**

Material: **AL6061**  
 Clamp Diameter: **31.8**  
 Bar Diameter: **24**  
 Widths (mm): **460/480/500**  
 Rise (mm): **20**  
 Flare/Outsweep (°): **0**  
 Drop (mm): **125**  
 Reach (mm): **78**  
 Weight (g): **315 (500mm)**



**MODEL: HIL-RD-008**

Material: **AL6061**  
 Clamp Diameter: **31.8**  
 Bar Diameter: **24**  
 Widths (mm): **400/420/440**  
 Rise (mm): **0**  
 Flare/Outsweep (°): **4**  
 Drop (mm): **125**  
 Reach (mm): **75**  
 Weight (g): **295 (420mm)**



**MODEL: HIL-RD-009**

Material: **AL6061**  
 Clamp Diameter: **31.8**  
 Bar Diameter: **24**  
 Widths (mm): **400/420/440/460**  
 Rise (mm): **0**  
 Flare/Outsweep (°): **12**  
 Drop (mm): **130**  
 Reach (mm): **75**  
 Weight (g): **305 (440mm)**



**MODEL: HIL-RD-010**

Material: **AL6061**  
 Clamp Diameter: **31.8**  
 Bar Diameter: **24**  
 Widths (mm): **380/400/420/440**  
 Rise (mm): **0**  
 Flare/Outsweep (°): **0**  
 Drop (mm): **126**  
 Reach (mm): **70**  
 Weight (g): **290 (420mm)**



**MODEL: HIL-RD-011**

Material: **AL6061**  
 Clamp Diameter: **31.8**  
 Bar Diameter: **24**  
 Widths (mm): **400/420/440**  
 Rise (mm): **20**  
 Flare/Outsweep (°): **0**  
 Drop (mm): **125**  
 Reach (mm): **70**  
 Weight (g): **315 (420mm)**



**MODEL: HIL-RD-012**

Material: **AL6061**  
 Clamp Diameter: **31.8**  
 Bar Diameter: **24**  
 Widths (mm): **360/380/400/420/440**  
 Rise (mm): **0**  
 Flare/Outsweep (°): **0**  
 Drop (mm): **128**  
 Reach (mm): **75**  
 Weight (g): **305 (420mm)**



**MODEL: HIL-RD-013**

Material: **AL6061**  
 Clamp Diameter: **31.8**  
 Bar Diameter: **24**  
 Widths (mm): **360/380/400/420/440**  
 Rise (mm): **0**  
 Flare/Outsweep (°): **0/4/3-16**  
 Drop (mm): **125**  
 Reach (mm): **70/74/78/80**  
 Weight (g): **310 (420mm)**



**MODEL: HIL-RD-017**

Material: **AL6061**  
 Clamp Diameter: **31.8**  
 Bar Diameter: **24**  
 Widths (mm): **380/400/420/440**  
 Rise (mm): **0**  
 Flare/Outsweep (°): **16/25**  
 Drop (mm): **124**  
 Reach (mm): **80**  
 Weight (g): **383 (420mm)**



**MODEL: HIL-RD-019**

Material: **AL6061**  
 Clamp Diameter: **25.4/31.8**  
 Bar Diameter: **24**  
 Widths (mm): **340/360/380/400/420/440/460**  
 Rise (mm): **0**  
 Flare/Outsweep (°): **0/3/16/25**  
 Drop (mm): **121/124/125**  
 Reach (mm): **74/80/85**  
 Weight (g): **132 (440mm)**



**MODEL: HIL-RD-021**

Material: **AL6061**  
 Clamp Diameter: **31.8**  
 Bar Diameter: **24**  
 Widths (mm): **380/400/420/440**  
 Rise (mm): **0**  
 Flare/Outsweep (°): **25**  
 Drop (mm): **118**  
 Reach (mm): **85**  
 Weight (g): **123 (440mm)**



**MODEL: HIL-RD-023**

Material: **AL6061**  
 Clamp Diameter: **25.4**  
 Bar Diameter: **24**  
 Widths (mm): **380/400/420/440**  
 Rise (mm): **0**  
 Flare/Outsweep (°): **0**  
 Drop (mm): **165**  
 Reach (mm): **105**  
 Weight (g): **226 (420mm)**



**MODEL: HIL-RD-024**

Material: **AL6061**  
 Clamp Diameter: **31.8**  
 Bar Diameter: **24**  
 Widths (mm): **400/420/440/460**  
 Rise (mm): **0**  
 Flare/Outsweep (°): **0**  
 Weight (g): **276 (440mm)**



**MODEL: HIL-TRK-001**

Material: **AL6061**  
 Clamp Diameter: **31.8**  
 Bar Diameter: **22.2**  
 Widths (mm): **660/700**  
 Backsweep Angle (°): **6 (660mm)/9 (700mm)**  
 Upsweep Angle (°): **5**  
 Rise (mm): **20**  
 Weight (g): **293 (660mm)**



**MODEL: HIL-TRK-002**

Material: **AL6061**  
 Clamp Diameter: **31.8**  
 Bar Diameter: **22.2**  
 Widths (mm): **600/700/760/800**  
 Backsweep Angle (°): **6 (600mm)/9 (700/760mm)**  
 Upsweep Angle (°): **0**  
 Rise (mm): **0/20**  
 Weight (g): **234 (600mm)**



**MODEL: HIL-TRK-004**

Material: **AL6061**  
 Clamp Diameter: **35**  
 Bar Diameter: **22.2**  
 Widths (mm): **750/800**  
 Backsweep Angle (°): **9**  
 Upsweep Angle (°): **4**  
 Rise (mm): **20**  
 Weight (g): **310 (750mm)**



**MODEL: HIL-TRK-005**

Material: **AL6061**  
 Clamp Diameter: **31.8**  
 Bar Diameter: **22.2**  
 Widths (mm): **600/620/640/660/680/700**  
 Backsweep Angle (°): **38**  
 Rise (mm): **21/38**  
 Weight (g): **315 (700mm)**



**MODEL: HIL-TRK-006**

Material: **AL6061**  
 Clamp Diameter: **31.8**  
 Bar Diameter: **22.2**  
 Widths (mm): **600/620/660/700**  
 Backsweep Angle (°): **18**  
 Rise (mm): **25**  
 Weight (g): **374 (700mm)**



**MODEL: HIL-TRK-009**

Material: **AL6061**  
 Clamp Diameter: **25.4**  
 Bar Diameter: **22.2**  
 Widths (mm): **540/560/580/600/620/640**  
 Backsweep Angle (°): **44/50**  
 Rise (mm): **66/75**  
 Weight (g): **280 (640mm)**



**MODEL: HIL-TRK-007**

Material: **AL6061**  
 Clamp Diameter: **25.4/31.8**  
 Bar Diameter: **22.2**  
 Widths (mm): **560/580/600/620/640/660**  
 Backsweep Angle (°): **27/23**  
 Rise (mm): **0**  
 Weight (g): **268 (660mm)**



**MODEL: HIL-TRK-011**

Material: **AL6061**  
 Clamp Diameter: **25.4**  
 Bar Diameter: **22.2**  
 Widths (mm): **590/610**  
 Backsweep Angle (°): **33**  
 Rise (mm): **26**  
 Weight (g): **236 (610mm)**



**MODEL: HIL-TRK-008**

Material: **AL6061**  
 Clamp Diameter: **25.4**  
 Bar Diameter: **22.2**  
 Widths (mm): **500/540mm**  
 Backsweep Angle (°): **70**  
 Rise (mm): **80**  
 Weight (g): **281 (540mm)**



**MODEL: HIL-TRK-012**

Material: **AL6061**  
 Clamp Diameter: **25.4**  
 Bar Diameter: **22.2**  
 Widths (mm): **635/650/700**  
 Backsweep Angle (°): **55**  
 Rise (mm): **135**  
 Weight (g): **321 (700mm)**

# WHEELRIMS





**MODEL: HIL-GRV-001**  
 Material: **AL6063**  
 Size: **20"/24"/26"/27.5"/700C**  
 Wall: **Double Wall**  
 Joint: **Sleeve**  
 Gauge: **13/14G**  
 Holes: **28/32/36H**  
 Weight (g): **513/538**



**MODEL: HIL-GRV-004**  
 Material: **AL6063**  
 Size: **20"/24"/26"/27.5"/700C**  
 Wall: **Double Wall**  
 Joint: **Sleeve**  
 Gauge: **13/14G**  
 Holes: **28/32/36H**  
 Weight (g): **500/558**



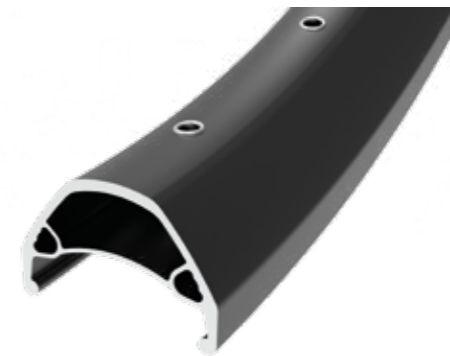
**MODEL: HIL-GRV-002**  
 Material: **AL6063**  
 Size: **20"/24"/26"/27.5"/700C**  
 Wall: **Double Wall**  
 Joint: **Pin**  
 Gauge: **13/14G**  
 Holes: **28/32H**  
 Options: **CNC Side Wall**  
 Weight (g): **580**



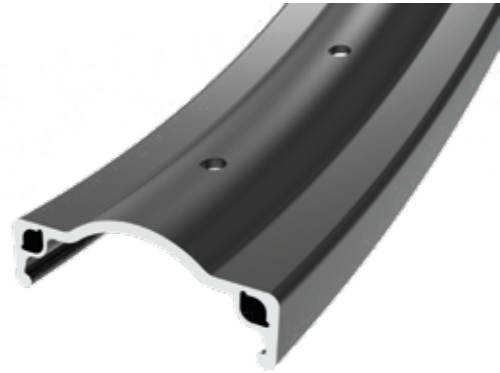
**MODEL: HIL-MTB-001**  
 Material: **AL6063**  
 Size: **20"/24"/26"/27.5"/700C**  
 Wall: **Double Wall**  
 Joint: **Sleeve**  
 Gauge: **13/14G**  
 Holes: **28/32H**  
 Weight (g): **497**



**MODEL: HIL-GRV-003**  
 Material: **AL6063**  
 Size: **26"/27.5"/700C**  
 Wall: **Double Wall**  
 Joint: **Pin**  
 Gauge: **13/14G**  
 Holes: **28/32H**  
 Options: **Eyelet**  
 Weight (g): **489**



**MODEL: HIL-MTB-002**  
 Material: **AL6063**  
 Size: **20"/24"/26"/27.5"/700C**  
 Wall: **Double Wall**  
 Joint: **Pin**  
 Gauge: **13/14G**  
 Holes: **28/32/36/48H**  
 Options: **CNC Side Wall/Eyelet**  
 Weight (g): **565**



**MODEL: HIL-MTB-003**

Material: **AL6063**  
 Size: **20"/24"/26"/27.5"/700C**  
 Wall: **Double Wall**  
 Joint: **Pin**  
 Gauge: **13/14G**  
 Holes: **24/28/32/36H**  
 Options: **CNC Side Wall**  
 Weight (g): **602**



**MODEL: HIL-MTB-008**

Material: **AL6063**  
 Size: **20"/24"/26"/27.5"/700C**  
 Wall: **Double Wall**  
 Joint: **Pin**  
 Gauge: **13/14G**  
 Holes: **32/36H**  
 Options: **Eyelet**  
 Weight (g): **552**



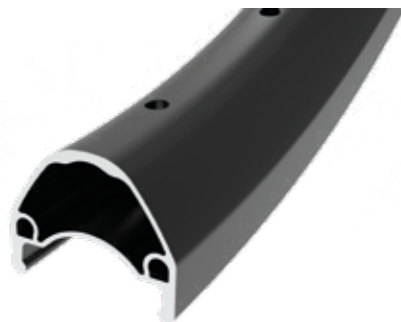
**MODEL: HIL-MTB-004**

Material: **AL6063**  
 Size: **20"/24"/26"/27.5"/700C**  
 Wall: **Double Wall**  
 Joint: **Sleeve**  
 Gauge: **13/14G**  
 Holes: **28/32/36H**  
 Options: **Eyelet/Side machine**  
 Weight (g): **568**



**MODEL: HIL-RD-004**

Material: **AL6063**  
 Size: **20"/24"/26"/27.5"/700C**  
 Wall: **Double Wall**  
 Joint: **Pin**  
 Gauge: **12/13/14G**  
 Holes: **28/32/36H**  
 Options: **Eyelet**  
 Weight (g): **523**



**MODEL: HIL-MTB-007**

Material: **AL6063**  
 Size: **26"/27.5"/700C**  
 Wall: **Double Wall**  
 Joint: **Pin**  
 Gauge: **13/14G**  
 Holes: **28/32H**  
 Options: **CNC Side Wall**  
 Weight (g): **529**



**For enquiry, call**

Prashant Rao +91 97252 95559 | [prashant.rao@adityabirla.com](mailto:prashant.rao@adityabirla.com)

Hindalco Industries Ltd.

Head Office:

21<sup>st</sup> Floor, One Unity Center, Senapati Bapat Marg, Prabhadevi, Mumbai 400 013

Manufacturing Facility:

Gut No. 31-2-1 to 31-2-18, Building B2, Mhalunge Road, Village Varale, Chakan, Pune 410 501

Visit [hindalco.com/industries/personal-mobility](http://hindalco.com/industries/personal-mobility) | Follow us on 